

AKASH ENGG. WORKS

An ISO 9001:2015 company

Specialist in: *All kinds of Autopart Components & CNC Turning*

Company Profile

INTRODUCTION

It gives us a great pleasure to be introduce you to **AKASH ENGG. WORKS**.

AKASH ENGG. WORKS was established in the year 2007. Our activity is in the form of manufacturing of Auto part Components. We manufacture our products with tough challenge like stringent specifications and rigorous quality standards set by our valuable customers as a personal commitment which has been confronted by dedication, commitment as excellence in work by our engineering team.

Today's **AKASH ENGG. WORKS** is manufacturing auto components such as 19 Dia to 48 Dia Socket, Hex 14 to 38 Hex nut, all kind of brass and copper components, all hose pipe fitting, Driver seat assembly, All types of turning components, etc.

We, the team **AKASH ENGG. WORKS** function in perfect synchronization with customer and are capable of achieving highest quality standards set by the customer-because we believe that the satisfied customer is an investment which only appreciates over the year and a perfect product is the bond for such continued relationship.

We assure you our best services & commitment with high degree of quality & reliability in the products and anticipate our association with your company.

Regards

Sunam Rai Kamboj

CEO - AKASH ENGG. WORKS

OUR VISION

- To be a reliable supplier of our valuable patrons by offering them a technically superior and commercially viable product which would meet and exceed their expectations.
- Continuous up gradation of our technology/implement effective quality management system and the overall growth of every employee in consonance with testing company's growth.
- To increase our market share from the existing customers base to new OEM's and white good manufactures.

Our Facilities

AKASH ENGG. WORKS has installed multi-manufacturing technology with high flexibility in production.

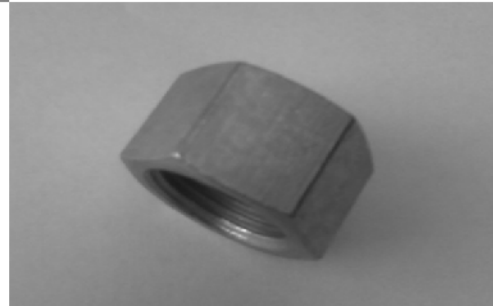
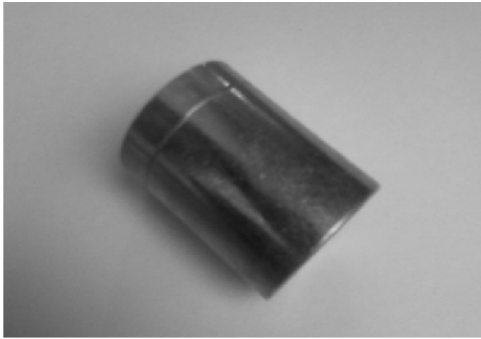
Industrial Man Power:24

Plant & Machinery

1.	C.N.C. Turning	200mm	2 Nos.
2.	Traub Machine	25mm	2 Nos.
3.	Traub Machine	32mm	5 Nos.
4.	Traub Machine	42mm	1 Nos.
5.	Traub Machine	49mm	1 Nos.
6.	Milling Adda		1 Nos.
7.	Micro Adda	25mm	2 Nos.
8.	Micro Adda	32mm	2 Nos.
9.	Micro Adda	60mm	1 Nos.
10.	Typing Adda	42mm	1 Nos.
11.	Drill Machine	½ "	7 Nos.
12.	Drill Machine	1"	1 Nos.
13.	Bench Grinder		2 Nos.

Customer Portfolio





AKASH ENGG. WORKS

Specialist in: All kinds of C.N.C. & Traub Machine Component

Plot no:40,Nangla-Gazipur Industrial Area,
Behind Radha Swami Satsang Nangla Gujran,
Faridabad-121005(HARYANA)
email : akashengg.work@rediffmail.com
Mobile no. : 9911551272