

BHALLA TECHTRAN INDUSTRIES LTD

(IATF16949:2016 Certified Company)

BHALLA TECHTRAN INDUSTRIES LTD

(IATF16949:2016 Certified Company)

INTRODUCTION

BHALLA TECHTRAN INDUSTRIES LTD

(IATF16949:2016 Certified Company)

Company Profile

Incorporated in 1985, **Bhalla Techtran Industries Limited** is one of the largest manufacturers of Cold Coil Precision Springs in India. Over the last 30 years, we, at BTL, have established ourselves as a renowned supplier of all types of springs. These springs are offered in a wide array varying from 0.6mm to 16mm wire diameter for the Automotive Industries as well as different ancillaries and component manufacturers. BTL has established two plants within Noida, which aids us in meeting our clients requisites much more effectively.

CUSTOMERS

BTL company is an **ISO 9001:2015 and IATF16949:2016 certified company through BSI India** and we have proven our stance in automotive segment as well as in general engineering too. Being one of the largest suppliers of springs, we cater to distinctive reputed names in automobile sectors within India like **M/s Munjal Showa Ltd., M/s Escorts Ltd., M/s Endurance Technologies. Ltd., M/s Yamaha Motors (I) Pvt. Ltd., M/s Gabriel India Ltd., M/S Showa India Pvt Ltd ,M/S KYB Suspension** etc . In addition to the large automotive sector, we also cater to General Engineering, Defence, Electrical, Railways, and other industries for their Springs requisites.

Our plants are located at Noida, which is 15 kms away from New Delhi, situated in a well-developed industrial area imparting all needed infrastructural facilities for a plant. The company is managed by **Mr. Amit J. Bhalla, the Managing Director**, of NRI group having sound financial base, combined with technical and professional competence in Springs technology and diversified areas of manufacturing, trading, construction in India and Kenya.

BHALLA TECHTRAN INDUSTRIES LTD

(IATF16949:2016 Certified Company)

**OUR
PLANTS**

BHALLA TECHTRAN INDUSTRIES LTD

(IATF16949:2016 Certified Company)

BHALLA TECHTRAN INDUSTRIES LTD.

(UNIT-1)

UNIT-1 : D- 24, SECTOR- 11, NOIDA

PH: 0120- 2520345, 2443274

www.btlsprings.com

BHALLA TECHTRAN INDUSTRIES LTD

(IATF16949:2016 Certified Company)



BHALLA TECHTRAN INDUSTRIES LTD

(IATF16949:2016 Certified Company)



BHALLA TECHTRAN INDUSTRIES LTD

(IATF16949:2016 Certified Company)



BHALLA TECHTRAN INDUSTRIES LTD

(IATF16949:2016 Certified Company)

TRAINING ROOM



BHALLA TECHTRAN INDUSTRIES LTD

(IATF16949:2016 Certified Company)

BHALLA TECHTRAN INDUSTRIES LTD.

(UNIT-2)

UNIT-1 : B- 24, SECTOR- 58, NOIDA

PH: 0120- 4236767, 4236768

www.btlsprings.com

BHALLA TECHTRAN INDUSTRIES LTD

(IATF16949:2016 Certified Company)



BHALLA TECHTRAN INDUSTRIES LTD

(IATF16949:2016 Certified Company)

OFFICE AREA

Office Corridor



Training Room



Conference Room



BHALLA TECHTRAN INDUSTRIES LTD

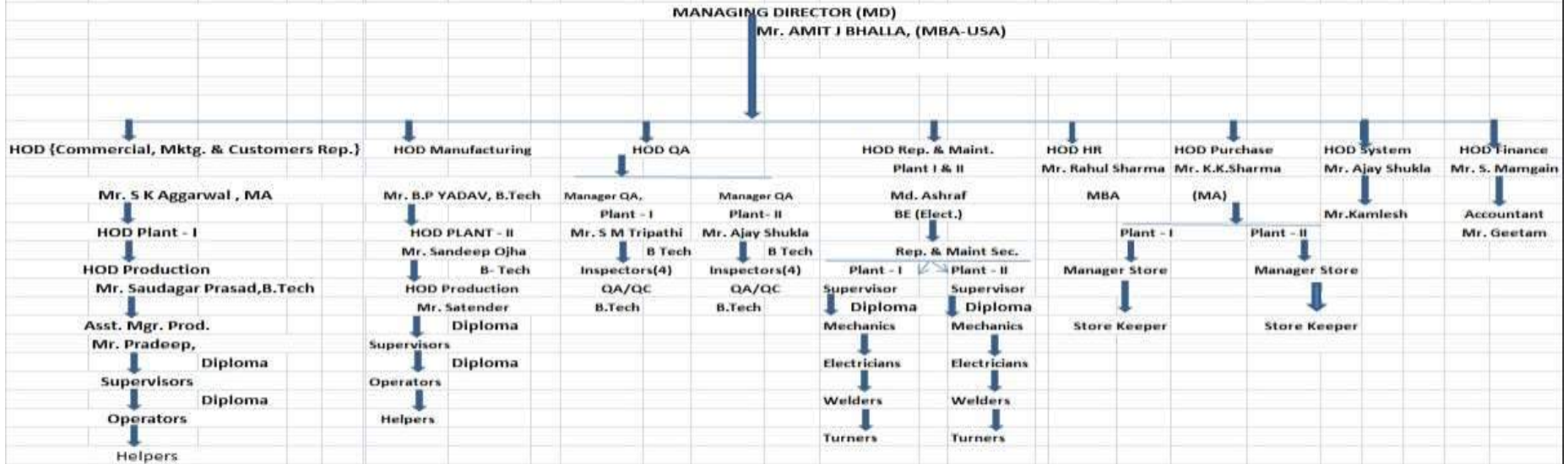
(IATF16949:2016 Certified Company)

ORGANIZATION STRUCTURE

BHALLA TECHTRAN INDUSTRIES LTD.

Doc No	QM/AX/01
Rev No	01
Rev Date	01.07.2020

ORGANISATION CHART



BHALLA TECHTRAN INDUSTRIES LTD

(IATF16949:2016 Certified Company)

M R M ROOM

UNIT-1



UNIT-2



BHALLA TECHTRAN INDUSTRIES LTD

(IATF16949:2016 Certified Company)

OUR MAIN CUSTOMERS

BHALLA TECHTRAN INDUSTRIES LTD

(IATF16949:2016 Certified Company)

MUNJAL SHOWA **40%**

ENDURANCE GROUP **30%**

SHOWA GROUP **20%**

GABRIEL +KYB **10%**

BHALLA TECHTRAN INDUSTRIES LTD

(IATF16949:2016 Certified Company)

Our Products

COMPRESSION SPRINGS



EXTENSION SPRINGS



TORSION SPRINGS



BHALLA TECHTRAN INDUSTRIES LTD

(IATF16949:2016 Certified Company)

RANGE OF PRODUCTS

FF - 0.6 mm to 5.00 mm

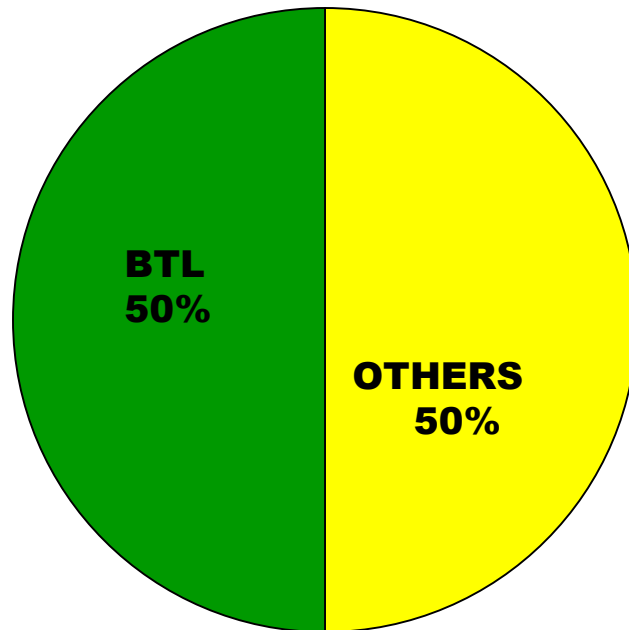
REAR – 5.50 mm to 16.00 mm



BHALLA TECHTRAN INDUSTRIES LTD

(IATF16949:2016 Certified Company)

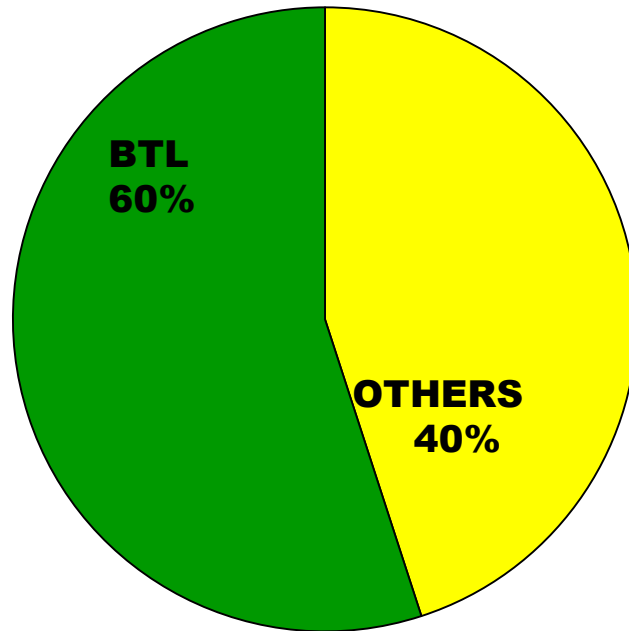
MARKET SHARE NOW



BHALLA TECHTRAN INDUSTRIES LTD

(IATF16949:2016 Certified Company)

AFTER 5 YEARS



BHALLA TECHTRAN INDUSTRIES LTD

(IATF16949:2016 Certified Company)

FUTURE PLANS

- 1. TO MAKE KYB SUSPENSION AS OUR MAIN CUSTOMER.**
- 2. TO ENTER FOUR WHEELER INDUSTRY.**
- 3. TO DOMINATE TORSION SPRING INDUSTRY.**
- 4. TO INCREASE SOB WITH SHOWA INDIA FOR DOMESTIC & EXPORT BUSINESS.**
- 5. TO ENTER TRACTOR INDUSTRY**

BHALLA TECHTRAN INDUSTRIES LTD

(IATF16949:2016 Certified Company)

Quality Policy **(2020-21)**

Bhalla Techtran Industries limited is committed:-

- **To provide high quality springs that fully meet customer requirements.**
- **To deliver defect free products, services and solutions to meet the requirements of our customers.**
- **To involve raw material suppliers for achieving the required quality of products and services on a continual basis.**
- **To involve all employees in quality improvement**
- **To strive for continued improvement through training and technology.**

BHALLA TECHTRAN INDUSTRIES LTD

(IATF16949:2016 Certified Company)

Quality OBJECTIVES (2020-21)

- **Rejection at coiling stage not to exceed by 0.5% of the monthly production by weight.**
HOD Production- QA
- **To monitor satisfactory customer service through continuous & measurable monitoring at least, once in a month.**
HOD Mktg.
- **To train to all personnel responsible for quality related activities for one hour, once in a month.**
HOD Production- QA
- **BTL is committed for safety of all employees, customers & interested parties.**
Top Management

BHALLA TECHTRAN INDUSTRIES LTD

(IATF16949:2016 Certified Company)

CORPORATE POLICIES

BHALLA TECHTRAN INDUSTRIES LTD

(IATF16949:2016 Certified Company)

Anti-Bribery Policy

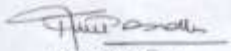
BTL SPRINGS QM/AX/08, Rev-00

Anti-Bribery Policy
(2020-2021)

BTL is committed to conducting business in an ethical and honest manner, and is committed to implementing and enforcing systems that ensure bribery is prevented. BTL has zero-tolerance for bribery and corrupt activities. We are committed to acting professionally, fairly, and with integrity in all business dealings and relationships, wherever in the country we operate.

We will constantly uphold all laws relating to anti-bribery and corruption in all the jurisdictions in which we operate.

BTL recognizes that if our company is discovered to have taken part in corrupt activities, we may be subjected to an unlimited fine, be excluded from tendering for public contracts, and face serious damage to our reputation. It is with this in mind that we commit to preventing bribery and corruption in our business, and take our legal responsibilities seriously.


AMIT J BHALLA
(Managing Director)

Dated: 01.09.2020
Place: Noida

Whistle-Blower Policy

BTL SPRINGS QM/AX/07, Rev-00

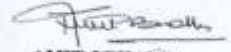
Whistle blower Policy
(2020-2021)

BTL is committed to conducting our business with honesty and integrity and we expect all of our staff to maintain high standards. However, all BTL face the risk of things going wrong from time to time, or of unknowingly harboring illegal or unethical conduct. A culture of openness and accountability is essential in order to prevent such situations occurring or to address them when they do occur.

The aims of this policy are:

- 1) To encourage staff to report suspected wrongdoing as soon as possible, in the knowledge that their concerns will be taken seriously and investigated as appropriate, and that their confidentiality will be respected.
- 2) To provide staff with guidance as to how to raise those concerns.
- 3) To reassure staff that they should be able to raise genuine concerns in good faith without fear of reprisals, even if they turn out to be mistaken.

This policy applies to all individuals working at all levels of the BTL, including directors, officers, senior managers, employees, consultants, contractors, trainees, casual and agency workers.


AMIT J BHALLA
(Managing Director)

Dated: 01.09.2020
Place: Noida

BHALLA TECHTRAN INDUSTRIES LTD

(IATF16949:2016 Certified Company)

QUALITY
MANAGEMENTSYSTEM
CERTIFICATION

BHALLA TECHTRAN INDUSTRIES LTD

(IATF16949:2016 Certified Company)



BHALLA TECHTRAN INDUSTRIES LTD

(IATF16949:2016 Certified Company)

PRESENT CAPACITY

FRONT FORK –	8 LAKH Springs per month
REAR SHOCKER –	5 LAKH Springs per month
REBOUND SPRINGS -	8 LAKH Springs per month
TORSION SPRINGS-	5 LAKH Springs per month

BHALLA TECHTRAN INDUSTRIES LTD

(IATF16949:2016 Certified Company)

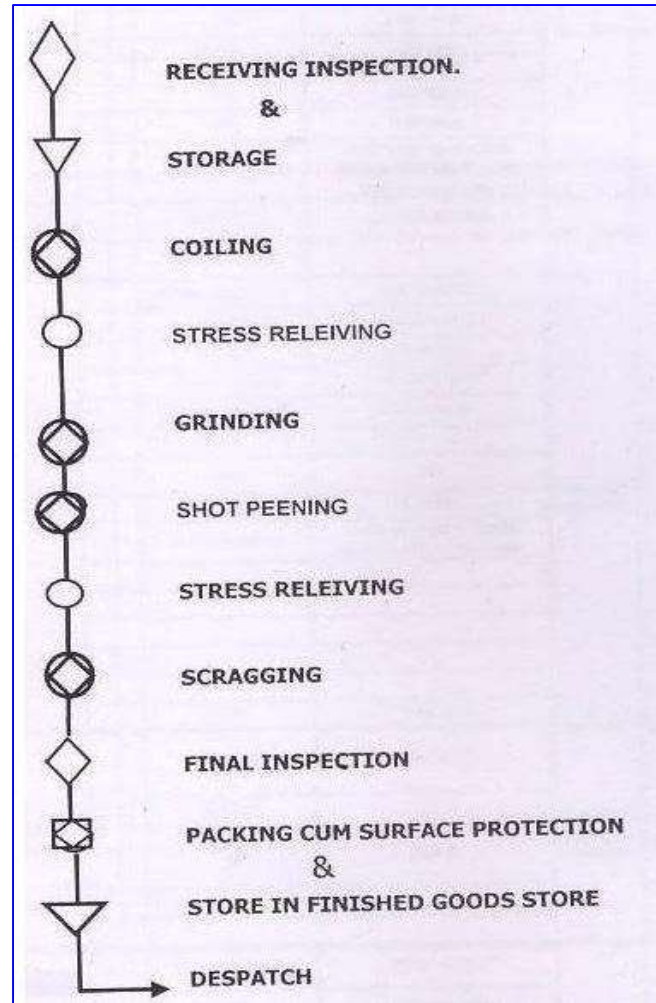
TURN OVER

80 CRORES

BHALLA TECHTRAN INDUSTRIES LTD

(IATF16949:2016 Certified Company)

PROCESS FLOW CHART



BHALLA TECHTRAN INDUSTRIES LTD

(IATF16949:2016 Certified Company)

LATEST ADDITION OF
STATE - OF - THE - ART
MACHINES

BHALLA TECHTRAN INDUSTRIES LTD

(IATF16949:2016 Certified Company)

NEW OKUNO CNC Coiling M/c
(8.0 MM TO 16.0 MM)



BHALLA TECHTRAN INDUSTRIES LTD

(IATF16949:2016 Certified Company)

OKUNO CNC Coiling M/c (5.0 MM TO 8.0 MM)



BHALLA TECHTRAN INDUSTRIES LTD

(IATF16949:2016 Certified Company)

HTC CNC Coiling M/c (5.0 MM TO 8.0 MM)



BHALLA TECHTRAN INDUSTRIES LTD

(IATF16949:2016 Certified Company)

CNC GRINDING M/c
(8.0 MM TO 16.0MM)

CNC GRINDING M/c
(5.0 MM TO 8.0MM)

CNC GRINDING M/c
(WNJ)



BHALLA TECHTRAN INDUSTRIES LTD

(IATF16949:2016 Certified Company)

COMPUTERIZED ENDURANCE TESTING M/c



LOAD TESTING M/c



BHALLA TECHTRAN INDUSTRIES LTD

(IATF16949:2016 Certified Company)

OKUNO CNC Coiling M/c

HTC CNC Coiling M/c



BHALLA TECHTRAN INDUSTRIES LTD

(IATF16949:2016 Certified Company)

OKUNO CNC Coiling M/c(with camera)



BHALLA TECHTRAN INDUSTRIES LTD

(IATF16949:2016 Certified Company)

FORMING CNC M/c



BHALLA TECHTRAN INDUSTRIES LTD

(IATF16949:2016 Certified Company)

NEW FORMING CNC M/c



BHALLA TECHTRAN INDUSTRIES LTD

(IATF16949:2016 Certified Company)

CNC RINGFORMING M/c



BHALLA TECHTRAN INDUSTRIES LTD

(IATF16949:2016 Certified Company)

CNC Grinding M/c



CNC Grinding M/c



BHALLA TECHTRAN INDUSTRIES LTD

(IATF16949:2016 Certified Company)

CNC Grinding M/c(Rebound spring)



BHALLA TECHTRAN INDUSTRIES LTD

(IATF16949:2016 Certified Company)

CNC FURNACE



CNC FURNACE



BHALLA TECHTRAN INDUSTRIES LTD

(IATF16949:2016 Certified Company)

COMPUTERIZED LOAD TESTING M/c-1

COMPUTERIZED LOAD TESTING M/c-2



BHALLA TECHTRAN INDUSTRIES LTD

(IATF16949:2016 Certified Company)

AUTOMATIC SHOT PEENING M/c-1



AUTOMATIC SHOT PEENING M/c-2



BHALLA TECHTRAN INDUSTRIES LTD

(IATF16949:2016 Certified Company)

QA LAB

BHALLA TECHTRAN INDUSTRIES LTD

(IATF16949:2016 Certified Company)



LOAD TESTING MACHINE UP TO 20KG



**LOAD TESTING MACHINE UP TO 1000
Kg**



**SPRING HARDNESS
TESTER**

BHALLA TECHTRAN INDUSTRIES LTD

(IATF16949:2016 Certified Company)



PROFILE PROJECTOR



**ENDURANCE TESTING
MACHINE(REBOUND
SPRING)**

BHALLA TECHTRAN INDUSTRIES LTD

(IATF16949:2016 Certified Company)

RM TESTING

FACILITY

BHALLA TECHTRAN INDUSTRIES LTD

(IATF16949:2016 Certified Company)



UTM MACHINE

BHALLA TECHTRAN INDUSTRIES LTD

(IATF16949:2016 Certified Company)

MAIN SOURCES OF RAW MATERIAL

TATA STEEL

USHA MARTIN

SAMWAH

BHALLA TECHTRAN INDUSTRIES LTD

(IATF16949:2016 Certified Company)

KRAs

CONSISTANT QUALITY

ZERO CUSTOMER COMPLANTS

MEETING CUSTOMER SCHEDULES

COST CONTROL

NEW DEVELOPMENTS

BHALLA TECHTRAN INDUSTRIES LTD

(IATF16949:2016 Certified Company)

TPM

BHALLA TECHTRAN INDUSTRIES LTD

(IATF16949:2016 Certified Company)

TPM Policy

We are at Bhalla Techtrain Industries limited are committed to practice TPM to improve product reliability and working culture , to eliminate losses of all types in a continual manner to maximize the operational efficiency and accomplish customer satisfaction, Safe environment through Total Employee Involvement .



BHALLA TECHTRAN INDUSTRIES LTD

(IATF16949:2016 Certified Company)

KAIZENS

BHALLA TECHTRAN INDUSTRIES LTD

(IATF16949:2016 Certified Company)

PRESENT SITUATION / PROBLEM



BHALLA TECHTRAN INDUSTRIES LTD

(IATF16949:2016 Certified Company)

Operation :GRINDING

COMPARISON – BEFORE & AFTER ACTION

BEFORE



GRINDING OPERATION WITH TWO HOLDING PLATES

VERTICLE LOAD ON THE SPRING CAUSES IT TO BUCKLE AT THE MIDDLE.

AFTER



GRINDING OPERATION WITH THREE HOLDING PLATES

PROVISION OF THIRD HOLDING PLATE HELPS TO AVOID BUCKLING/ BENDING

BHALLA TECHTRAN INDUSTRIES LTD

(IATF16949:2016 Certified Company)

Operation :SCRAGGING

COMPARISON – BEFORE & AFTER ACTION

BEFORE



SCRAGGING OPERATION WITH SINGLE SPRING PRESS

AFTER



SCRAGGING ACTION WITH FOUR SPRINGS IN ONE OPERATION

BHALLA TECHTRAN INDUSTRIES LTD

(IATF16949:2016 Certified Company)

COMPARISON – BEFORE & AFTER ACTION

Operation :- SHOTPEENING

BEFORE



GAP BETWEEN THE TOP OF RUBBER BELT AND
BODY

AFTER



FIXED A DEFLECTOR PLATE TO AVOID
ENTANGLEMENT OF SPRINGS

Our journey Continues towards Improvement

Permit no day to go by without some
improvement

Thomas Kempis



THANK YOU