

Shreeji Enterprise

An ISO 9001:2015 Certified Company

2, Rani Industrial, Vavdi, near Krishna Park Hotel, B/h. Parin Furniture, National Highway Rajkot-Gondal, Rajkot – 360004 (GUJ) INDIA

Mob - +91-77788 74717

Email :

marketing.shreejienterprise@gmail.com

info@shreejienterprise.co.in

Web : <http://shreejienterprise.co.in>

A Quality Manufacturer of All Type of Stainless Steel, Mild Steel and Aluminum Components, Bar Stock Parts and Mould Dies and Patterns



INTRODUCTION

- **Shreeji Enterprise** (A Partnership Company), Valve-pump & Engineering component & Die Mould / Pattern manufacturing unit was incorporated in the year 2003 with aim to cater Quality Product requirement of their customers. Company has state of art technological work shop for manufacturing facilitated with 13-CNC & 6-VMC Machine with standard room inspection & measuring facility. Company has its own conventional Shop for Pre machining facilitate with 6 Lathes and 3 drilling machines and others.

QUALITY

- We are Specialized in development of best Class Quality Stainless Steel, Mild Steel and Aluminium Parts, Components and Manual, semi & fully automatic Investment casting mould, Impeller, diffuser propeller, Diffuser Die/Pattern designing and mfg and machining(our expertise and prior area).
- Quality and perfection has been the foundation stones of success for the company. We are Certified with **ISO 9001-2015 Quality** standard organization.
- We use regular quality control measures of all critical operations, to nurture quality at all levels of the business.
- We not only emphasize the need for quality in all our operations, but we constantly strive to follow and improve our quality standards.

Our Strength

- Full Finished Components of forging flanges , forging rings & investment casting & bar stock Components.
- All type precision Manual, semi & fully automatic Investment casting mould mfg.
- Supporting in Precision Parts & Developed parts mfg.
- Mechanical design & Prototype Development.
- Technical support to our vendor & customer.
- Impeller, diffuser propeller, Diffuser Die/Pattern designing and mfg and machining(our expertise and prior area)

PRODUCT RANGE

-
- **Bar Stock & Hardware Parts**
 - **Bar Stock Valve Parts**
 - **Forging Ring, Ring Rolling Parts**
 - **Impeller-casing-bowl Investment Casting Parts**
 - **Pipe & Fitting Parts**
 - **Pipe-flanges**
 - **All Types Of Still –Flange**
 - **Submersible-pump Parts**
 - **Valve & Pump Parts**



Bar Stock & Hardware Parts

Bar Stock Valve Parts





Submersible-pump Parts

Valve & Pump Parts





**Impeller-casing-bowl
Investment Casting
Parts**



Forging Ring, Ring Rolling Parts

Pipe & fitting Parts

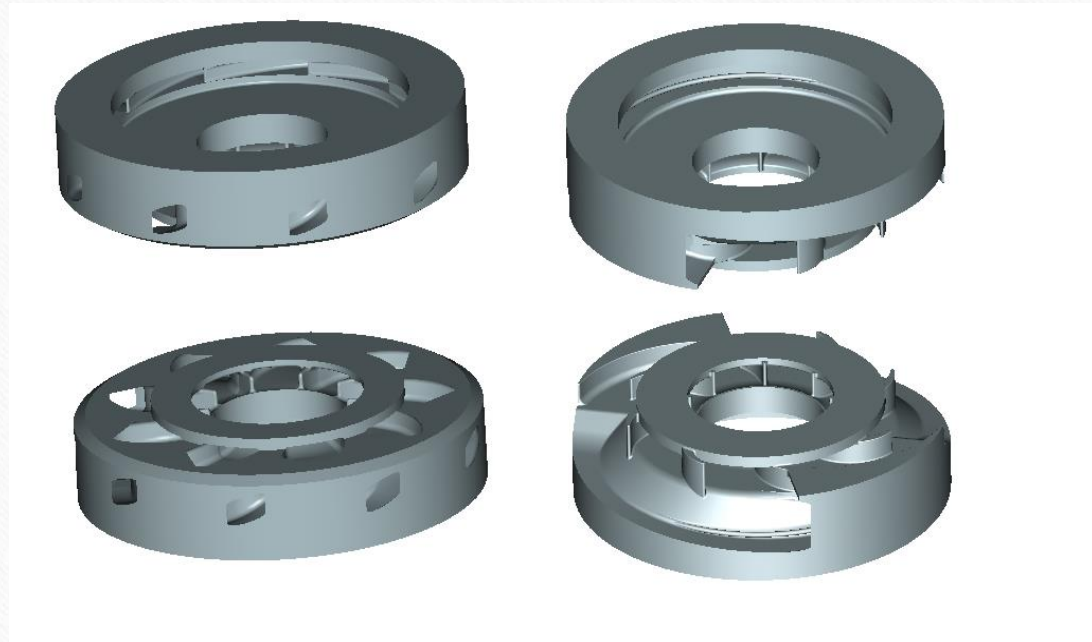




Pipe Flanges



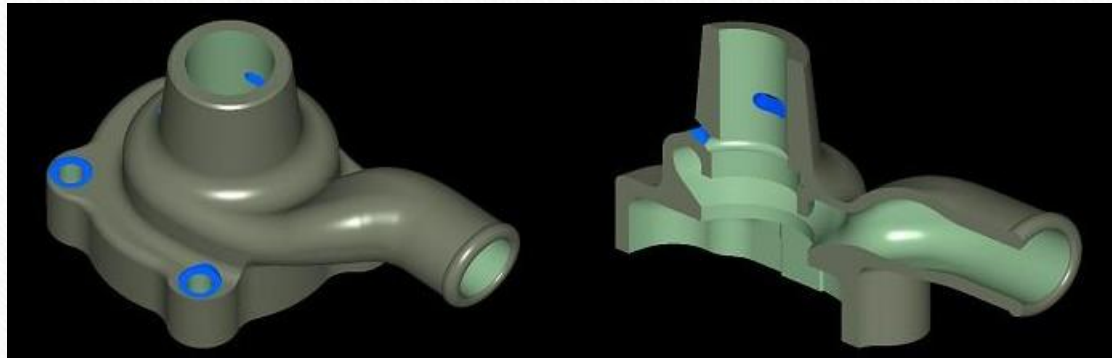
Steel (SS - MS) - flange



**Diffuser Die
For Investment Casting**



**Spiral Die
For Investment Casting**



**Pump Part Die
For Investment Casting**



**Pump & casing Die
For Investment Casting**

VALUED CUSTOMERS

- **Boehler EINBAUTEILE GMBH - GERMANY**
- **Linit Export – Mumbai**
- **Nikki Saw (ACD) – Baroda**
(USA Based Company)
- **ISRO – Govt. of India Organization**
- **WPIL Limited Ghaziabad**
- **Singla Motors – Karnal - Harayana**
- **Phoenix Maccano – Pune**
- **IPCL – Bhavnagar**
- **Nova Technocast – Rajkot**
- **Amtech Investment Cast – Rajkot**
- **Rotex Automation – Baroda**
- **Exxon International - Mumbai**

THANK YOU

Please Feel Free to Contact us for your valuable inquiry @

Email : marketing.shreejienterprise@gmail.com / info@shreejienterprise.co.in

<http://shreejienterprise.co.in>

Works :

Shreeji Enterprise

2, Rani Industrial Area, Vavdi(near Krishna Park Hotel), B/h. Parin Furniture,

National Highway Rajkot-Gondal, Rajkot – 360 004(GUJ)-INDIA